

KWP-FOLD TRIMLESS

TECHNICAL DATA

HINGED IN PAIRS

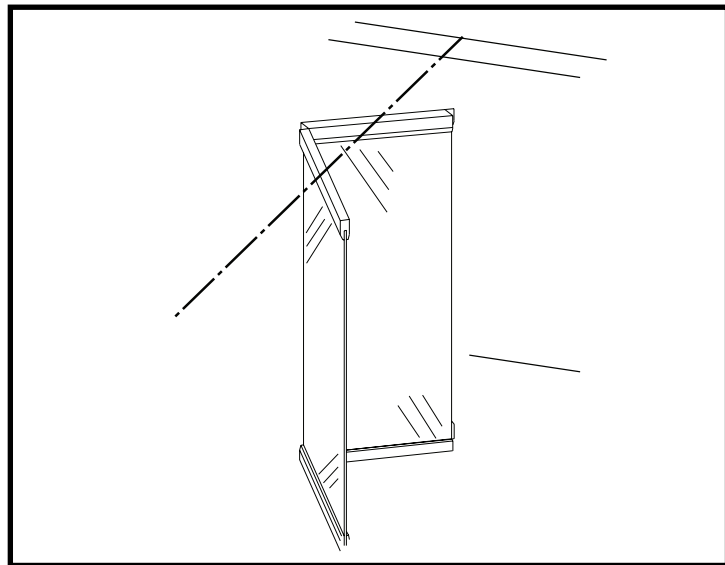
KWIK-WALL... One Source for Wall Systems.

KWIK-WALL's KWP-Fold Series - Glass wall systems answer the challenge for space division needs. This system ensures you can quickly and easily provide complete solutions for space division needs in hotels, schools, airports shopping centers, sports arenas, residential layouts, and office buildings. Years of continuing research and development have produced many outstanding features.

KWIK-WALL's The KWP-Fold combines the elegant horizontal top and bottom glass retainer, prevalent in all other Clear Division models, with the hinged in pair Type 425 Track and carrier system.

FEATURES

- Elegant top-fixed suspension and glass retainer
- One (1) standard glass finish style - multiple options
- Center Stack
- Secure locking system





1.01 WORK INCLUDED

- A. Moveable glass wall system shall be furnished, installed, and serviced by KWIK-WALL's authorized distributor, in compliance with the architectural drawings and specifications contained herein.

1.02 RELATED WORK

- A. Structural Support: Structural support system required for suspending the moveable glass wall shall be designed, installed, and pre-punched by others, in accordance with ASTM E 557 and KWIK-WALL's shop drawings.
- B. Opening Preparation: Proper and complete preparation of the moveable glass wall system opening shall be by others in accordance with ASTM E 557, and shall include floor leveling; plumbness of adjoining permanent walls; substrate and / or ceiling tile enclosures for the track system; and the painting and finishing of trim and other materials adjoining the head and jamb areas of the moveable glass wall. Refer to a copy of the shop drawings for additional details.

1.03 SYSTEM DESCRIPTION

- A. The operable wall system shall consist of Hinged Pairs operation, featuring panels hinged together in evenly matched pairs (groups of two (2)), unless otherwise specified.
- B. The moveable glass wall system shall consist of nominal 3/8" [10] or 1/2" [12.7] thick tempered glass panels suspended from a continuous aluminum glass retainer located at the top and bottom of each panel.

1.04 QUALITY ASSURANCE

- A. Installer Qualifications: An experienced installer who is certified in writing by KWIK-WALL as qualified to install KWIK-WALL's systems for work similar in material, design, and extent to that indicated for this project.
- B. The moveable glass wall panel shall utilize clear tempered glass per ASTM C 1048-04.
- C. The moveable glass wall shall be installed by KWIK-WALL's authorized distributor in accordance with ASTM E 557.
- D. The glass wall panel construction and finish materials shall consist of Class A rated materials in accordance with ASTM E 84.

1.05 REFERENCES

- A. ASTM C 1036-01: Standard Specification for Flat Glass.
- B. ASTM C 1048-04: Standard Specification for Heat Treated Flat Glass.
- C. ASTM E 557: Architectural Application and Installation of Operable Partitions.
- D. ASTM C 1172-03: Standard specifications for laminated architectural flat glass.

1.06 SUBMITTALS

- A. KWIK-WALL shall provide written technical information and related detail drawings, which demonstrate that products comply with contract documents for each type of moveable glass wall system specified.
- B. KWIK-WALL shall provide detailed engineering drawings featuring track plan, panel elevation, horizontal and vertical details and beam punching template as required.

1.07 DELIVERY, STORAGE AND HANDLING

- A. Panels shall be shipped in a completely enclosed wooden crate with high-density polystyrene blocks positioned between each panel to protect glass and hardware during delivery, storage and handling.
- B. Panels shall be stored on edge and above the floor on cushioned blocking in a dry and ventilated area, protected from humidity and temperature extremes.

1.08 SEQUENCING / SCHEDULING

- A. Beam Punching: KWIK-WALL shall provide beam punching template drawing detailing the anchor locations for the suspended track system for Drop Rod Mounting, as required for the fabrication and installation of structural overhead support by others.
- B. Track Installation: Scheduling of moveable glass wall track installation shall occur after structural overhead support has been properly and completely fabricated and installed by others.
- C. Panel Installation: Moveable glass wall panel installation shall occur after fixed wall substrate construction is properly and completely installed by others, as required to protect panels from ongoing adjacent construction.

1.09 WARRANTY

- A. KWIK-WALL shall warrant each moveable glass wall system and its hardware components to be free from defects in material and workmanship for a period of five (5) years from the date of delivery to the original purchaser, when installed by an authorized KWIK-WALL distributor. (Glass is specifically excluded from the warranty.)



2.01 ACCEPTABLE MANUFACTURER

- A. Moveable glass walls shall be CLEAR-DIVISIONS KWP-Fold Paired panels as manufactured by KWIK-WALL.

2.02 PANEL CONSTRUCTION

- A. Panel Dimensions: Standard panel dimension shall be a nominal $1\frac{3}{32}$ " [36] thick.
- B. Horizontal Top and Bottom Rails: Top and bottom rails shall be continuous one-piece extrusion manufactured of structural grade aluminum as engineered by HAWA® with removable end caps. Rails shall utilize a cam lock feature to provide positive mechanical attachment to glass. (Passive friction type or adhesive applied rails shall not be allowed for safety reasons.)
- C. Bottom Rail Locking System: Each bottom rail glass retainer shall contain (select):
1. Standard Operable Floor Lock: consisting of a face activated lever located on one (1) side of the panel connected to a floor lock that engages a recessed spring loaded dust-proof strike to provide stability and security when the moveable glass wall system is setup in the extended position. Intermediate panels shall have face activated lock for additional stability and security.
 2. Optional Keyed / Thumb Turn Lock: consisting of key operated cylinders on both sides or key operation on one (1) side and thumb turn operation on opposite side.
 3. Optional Thumbturn: Consisting of an operable floor lock operated by a thumb turn that engages a recessed spring loaded dust-proof strike to provide stability and security when the moveable glass wall system is extended.
- D. Glass: Panels shall be glazed with $\frac{3}{8}$ " [10] or $\frac{1}{2}$ " [12.7] tempered glass that is manufactured in accordance with ASTM C 1036-01, ASTM C 1048-04, and ANSI Z97.1. Glass finish shall be (select):
1. Standard Clear: consisting of clear tempered glass (select):
 - a. $\frac{3}{8}$ " [10] thick glass for Panel Heights up to 9'-0" (2.74 m).
 - b. $\frac{1}{2}$ " [12.7] thick glass for Panel Heights up to 10'-0" (3.05 m).
 2. Optional Smoked Bronze, Smoked Gray, Smoked Green, Smoked White or Clear Satin Etched: consisting of tinted laminated glass (select):
 - a. $\frac{3}{8}$ " [10] thick glass for Panel Heights up to 9'-0" (2.74 m).
 - b. $\frac{1}{2}$ " [12.7] thick glass for Panel Heights up to 10'-0" (3.05 m).
 3. Optional Clear Satin Etched: consisting of translucent tempered or laminated glass (select):
 - a. $\frac{3}{8}$ " [10] thick glass for Panel Heights up to 9'-0" (2.74 m).
 - b. $\frac{1}{2}$ " [12.7] thick glass for Panel Heights up to 10'-0" (3.05 m).
 4. Optional Decorated or Patterned: consisting of $\frac{3}{8}$ " [10] tempered glass decorated or patterned as selected by designer. (Maximum Panel Height 9'-0" (2.74 m)).
- E. Panel Weight: Maximum panel weight shall not exceed 330 lb. (150 kg) calculated at 7.35 lb. / ft.² (36 kg / m²).

2.03 OPERATION

- A. Operation shall Paired Panels, which are top supported by one (1) carrier per panel on an overhead aluminum track.

2.04 STACK ARRANGEMENTS

- A. Stack Type: Panel storage configuration shall be (select):
1. Standard Center Stack: consisting of panels stacking on center to the wall's installed position.
- B. Stack Quantity: Panels shall be stored at one end of the wall or both ends.

2.05 FINISHES

- A. Hardware Finish: Panel hardware including horizontal rails shall be finished of (select):
1. Standard Finish: Clear Anodized Aluminum.
- B. Pull Handle Finish: Handle finish shall be (select):
1. Standard Finish: consisting of Stainless Steel Satin Effect finish

2.06 PERIMETER TRIM AND SEALS

- A. Trim and Seals shall consist of (select):
1. Standard Trimless: consisting of $\frac{3}{8}$ " [10] or $\frac{1}{2}$ " [12.7] tempered glass with a sanded / beveled edge, resulting in a minimal groove appearance between adjacent glass panels.
 2. Optional Vertical Protective Edge Trim: consisting of $\frac{3}{8}$ " [10] or $\frac{1}{2}$ " [12.7] tempered glass with a sanded / beveled edge utilizing a full vertical transparent protective edge trim encapsulating the edge of the glass.

2.07 CLOSURE SYSTEMS

- A. Initial Closure System: The lead pair (the first panels exiting the stack) shall intersect vertically against a rigid wall surface as accomplished by a lead panel that does not use any vertical jamb to affect initial closure. Trail edge of lead panel shall contain a foot-operated floor lock.
- B. Final Closure System: The final closure panel (the last panel at the stack end) shall provide a method for affecting final closure of the moveable glass wall system. The type of final closure panel shall be (select):
1. Standard Fixed Pivot Panel Closure: consisting of a panel utilizing top and bottom pivots that allows the panel to pivot 90° in both directions and be used to affect final closure, and provides access thru the moveable glass wall system when it is setup in the extended position.
 2. Optional: Same as initial closure
 3. Optional Pocket Door(s): (see "Glass Wall Pocket Door" brochure for complete details and specifications).



2.08 PANEL ACCESSORIES

A. Accessories shall be compatible with other accessories and options, furnished by Kwik-Wall as noted on submitted shop drawings.

2.09 TRACK SYSTEM

A. Track Type: The operable wall track system shall be:

1. Standard Hinged Pairs Aluminum Track: extruded from structural aluminum alloy, which prohibits deterioration caused by rust or corrosion. The aluminum track shall have a durable anodized clear satin finish, which resists color fading and flaking. The track shall utilize grooves and interlocking steel pins for positive alignment of adjacent track sections. The track joints shall be reinforced overhead by a heavy-duty steel bracket made of hot-rolled, 3/8" [10] thick plate steel. Aluminum track shall include an integral nut slot to accept a hardened steel square nut to facilitate attachment of each steel all-rod and splice brackets to the overhead structural support.

2.10 CARRIER SYSTEMS

A. Carrier: Each panel shall be top supported by one (1) carrier utilizing 5/8" diameter pendant bolts. Each carrier shall contain four (4) permanently-lubricated, ball bearing steel wheels with high-density polymer tires as required for ease of panel movement.

2.11 SUSPENSION SYSTEMS

A. Mounting Systems: The KWP-FOLD track system shall be supported by (select):

1. Standard Drop Rod Mount: consisting of steel drop rod brackets with drop rods, consisting of adjustable rods of grade 2, 3/8" [10] diameter threaded steel all-rod provided with 3/8" [10] serrated steel nuts.
2. Optional Direct Mount: consists of 3/8" [10] x 3" [76] lag screws for attachment to a level overhead structural (wood or steel) support.
3. Optional Drop Rod Bracket Mount: consisting of 3/8" [10] thick steel brackets mounted to top flange of track and supported with adjustable rods of grade 2, 3/8" [10] diameter threaded steel all-rod provided with 3/8" [10] serrated steel nuts.



3.01 INSPECTION

- A. Proper and complete preparation of the moveable glass wall system opening shall be by others in accordance with the architectural drawings, KWIK-WALL’s shop drawings and ASTM E 557. Any deviation of the actual opening from these specifications shall be called to the attention of the architect prior to the installation of the operable wall.
- B. Deficiencies in the moveable glass wall opening shall be corrected by others prior to installation of the moveable glass wall system.

3.02 INSTALLATION

- A. The moveable glass wall system shall be installed by KWIK-WALL’s authorized distributor.
- B. The moveable glass wall shall be installed in accordance with KWIK-ALL’s written instructions, shop drawings and ASTM E 557 installation guidelines.

3.03 ADJUSTING AND CLEANING

- A. The moveable glass wall panels and track system shall be adjusted and cleaned in accordance with KWIK-WALL’s written instructions.

3.04 PROTECTION

- A. The moveable glass wall panels shall be stored in the stacked (retracted) position prior to acceptance by the owner’s representative.

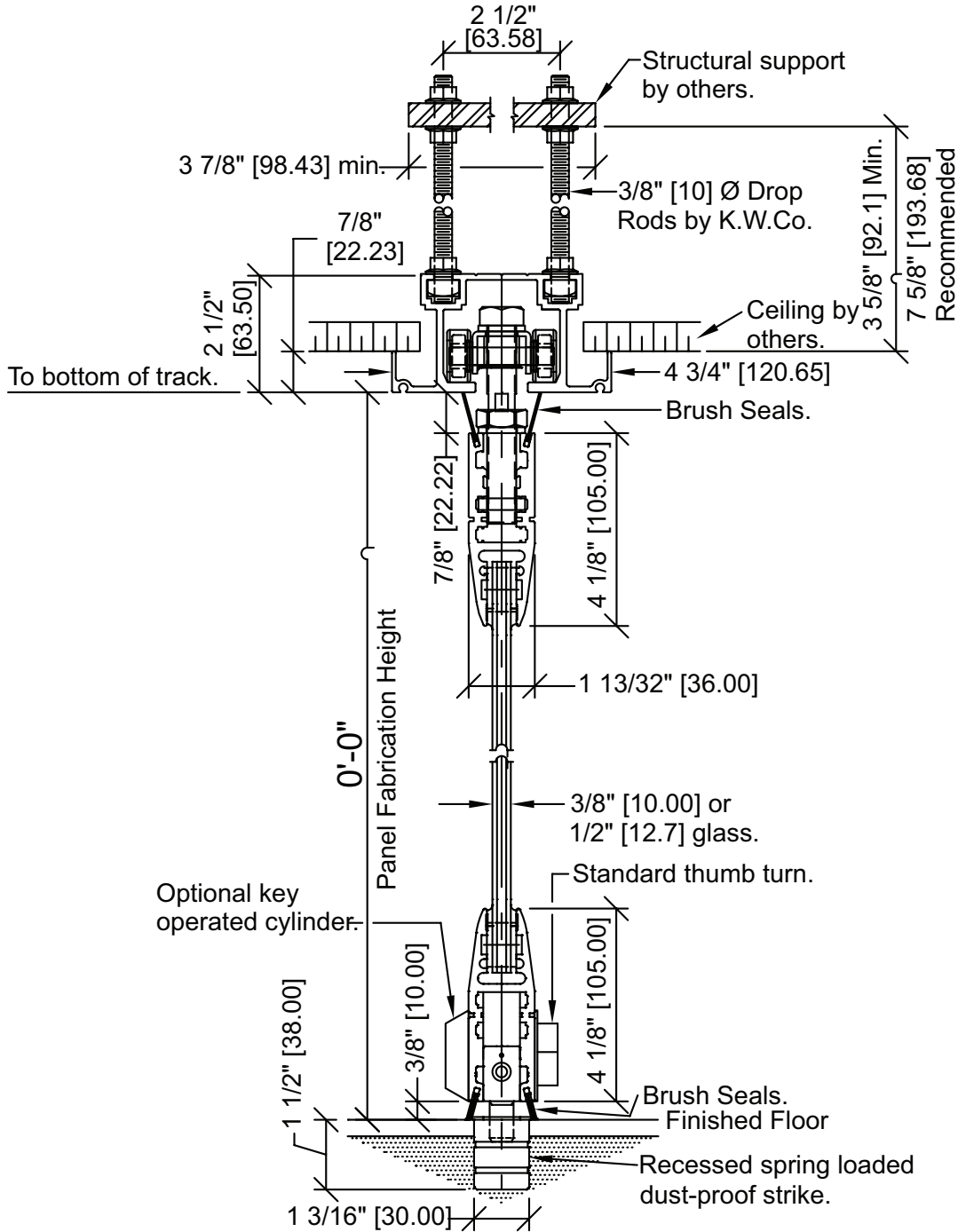
3.05 DEMONSTRATION

- A. KWIK-WALL’s authorized distributor shall demonstrate proper operation and explain proper and necessary maintenance requirements of the moveable glass wall system to the owner’s representative.

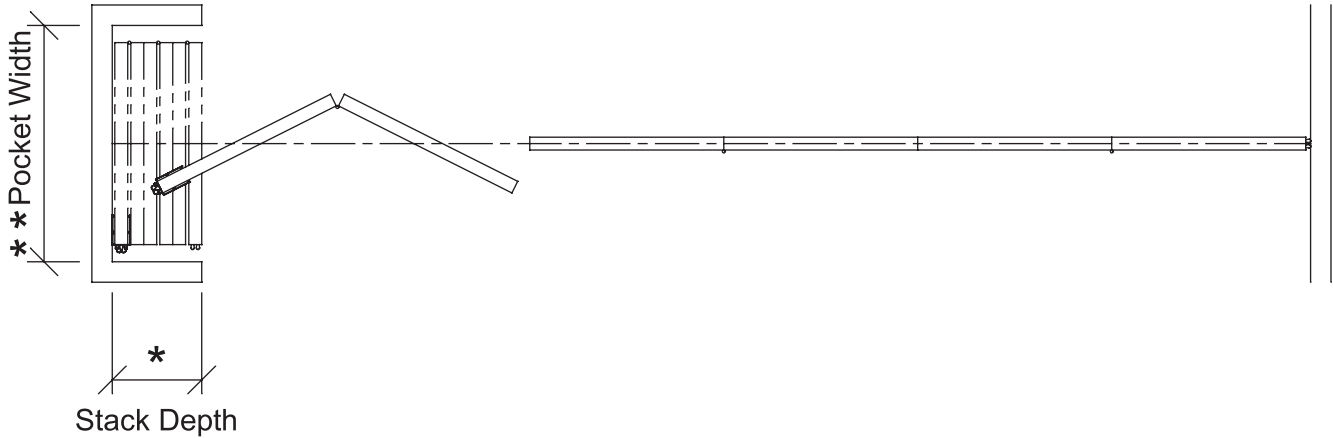
| KWP-Fold PRODUCT SELECTION GUIDE | | | | | | | |
|---|---------------|-----------------------------|--|--------------------------|-------------------------------------|-----------------------|--------------------|
| Model | Operation | Stack Arrangements | Glass | Perimeter Trim and Seals | Final Closure Options | Maximum Panel Height | Maximum Wall Width |
| KWP-Fold | Paired Panels | Standard: Center Stacked | Standard: Clear Optional: Etched, Smoked, Decorated, Patterned or Berman editions | Standard: Trimless | **Standard: Fixed Pivot Panel | *10' - 6" (3.20 m) | Unlimited |

**Pivot Panel may not be required. Consult your KWIK-WALL representative for proper configuration.

425 Hinged Pair
Aluminum Track



Vertical Detail
KWP-Fold Trimless



Standard Center Stack

Panels shall be Center Stacked, consisting of panels stacking to the center of the wall's installed position.

Stack Depth*

The overall depth of the stack area, as required for panel storage, is dictated by the total number of panels in the wall system. KWIK-WALL's KWP-Fold panels require an average stack depth of 2³/₈" [60] per panel. To determine the stack depth, calculate as follows:

$$\text{Number of Panels} \times 2\frac{3}{8}" [60] + 2\frac{1}{8}" [54] + \frac{3}{4}" [18]$$

*Note: Additional stack depth is required for wall systems containing the following type of panels:

- Handle: 3¹/₂" [89]
- Pivot Panel(s) Closure: 2³/₈" [60]
- Pocket Door(s): 6" [152]

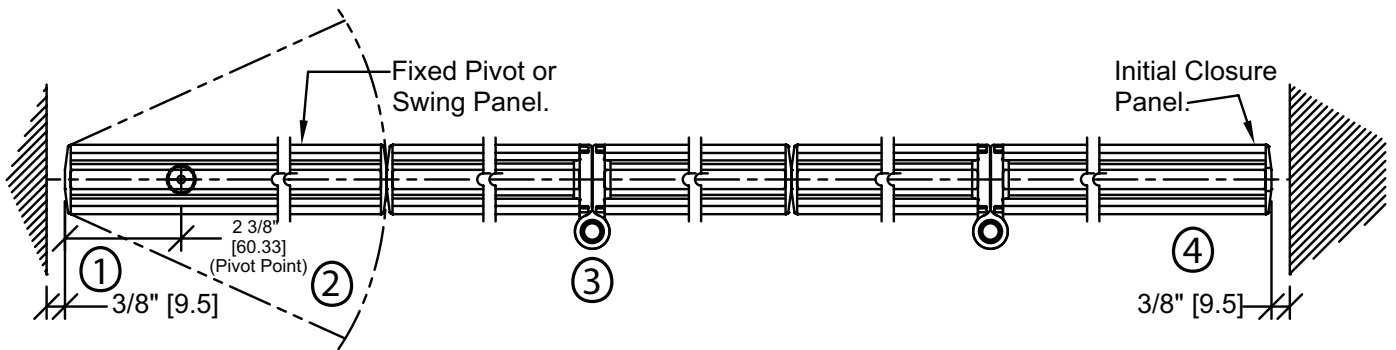
**For wall systems that include Pocket Doors, please reference KWIK-WALL's "Variotec" brochure for pocket layout dimensions and applications.

Pocket Width**

The width of the pocket is determined by the widest panel in the wall run. For specification purposes, assume the widest panel is 2'-11¹/₁₆" [90 cm] maximum. Pocket width may be calculated as follows:

$$\text{Panel Width} + 7" [178]$$

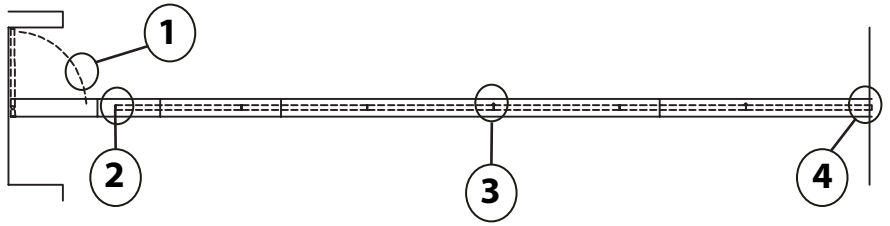
(allows 3¹/₂" [89] for hand clearance on each side)



Horizontal Detail - KWP-Fold Trimless

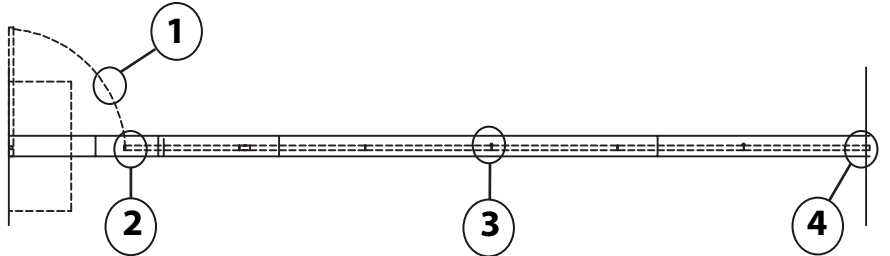
Fixed Pivot Half Panel

This final closure configuration is accomplished by a (single) half panel which is hinged permanently and directly to a structural wall (as shown at right).



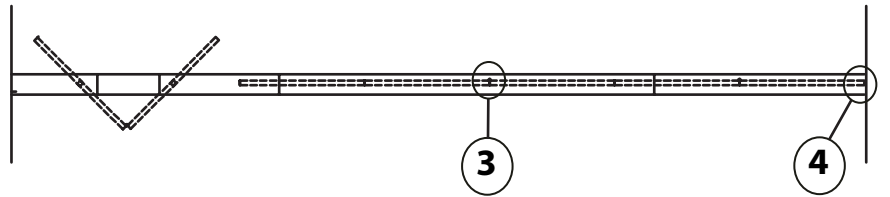
Optional Fixed Swing Panel

Consisting of a panel utilizing top and bottom pivots that engages with a self-closing unit containing a hold open feature allowing the panel to pivot 90° in both directions. Provides access thru the wall system when setup is in extended position.



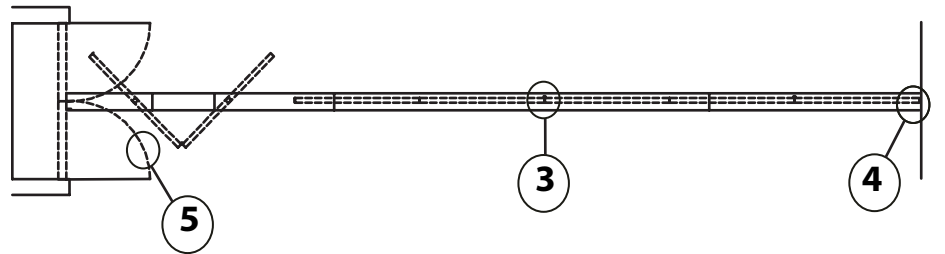
Standard Center Stack

Panels are conveniently stored at one or both ends and stacked on-center to the wall's installed position.



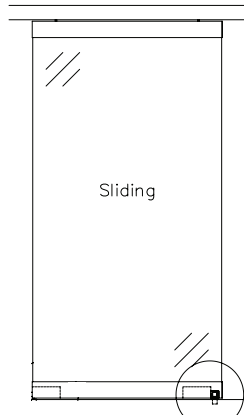
Optional Pocket Door

Double Doors w/ Lap Trim: consisting of two (2) individual panels with each panel being hinged to an adjustable jamb. The lead edge of each panel shall contain a lap type extrusion that overlaps with the other one, creating a shiplap joint.



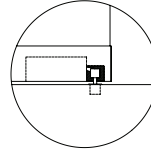
1. Pivot Door/Swing Door
2. Pivot meets Sliding Door
3. Typical Joint
4. Initial Closure Panel
5. Pocket Door

Horizontal details for numbers 1 through 5 can be found on page 8

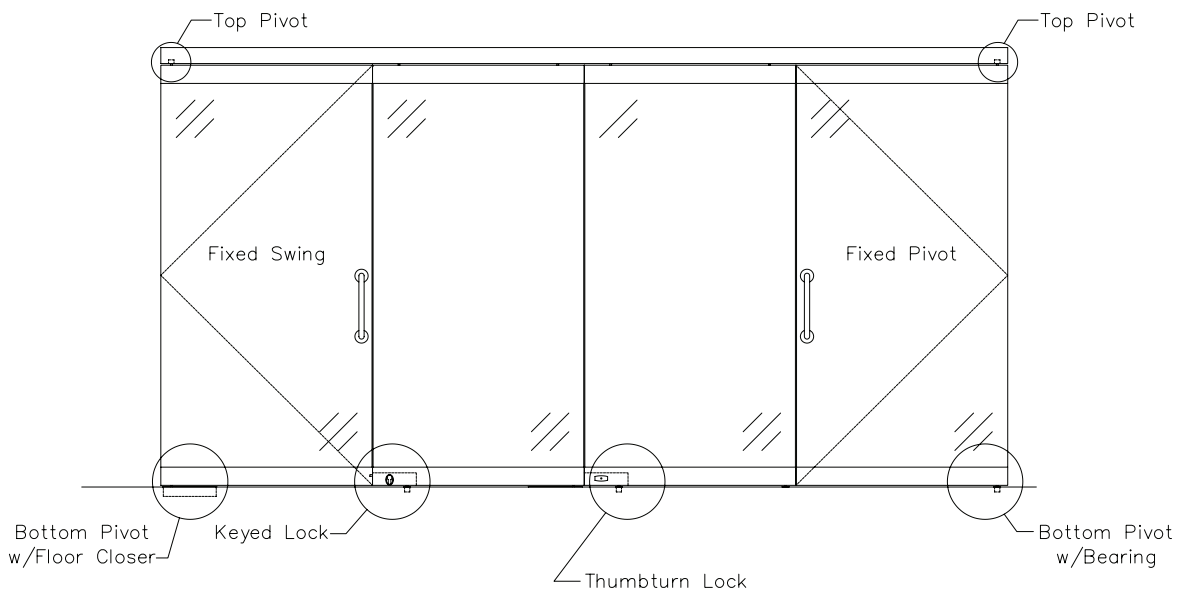
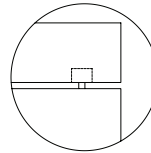


Face-activated
Footlock

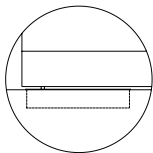
Face
Activated
Footlock



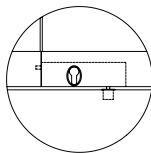
Top Pivot



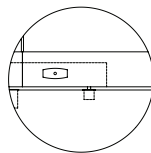
Bottom Pivot
w/Floor Closer



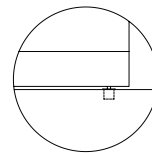
Keyed
Lock



Thumbturn
Lock



Bottom pivot
w/Bearing

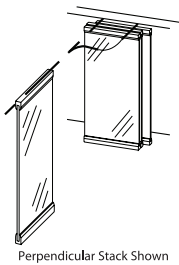


KWIK-WALL Offers a full complement of accessories for customizing any glass wall system to meet the specific needs of the most demanding project.

If you don't see the style or options and accessories you are looking for, KWIK-WALL has many other styles of Operable Glass Walls to bring you the solution to your space division needs.

This Product Selection Guide will step you through the various features of each model. Product stack arrangements and details show the more common elements for each model.

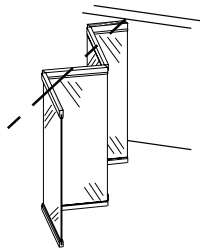
| PRODUCT FEATURES | | | | | | | |
|----------------------------|------------|---------------------|---------------------|---------------|-----------------------|------------------------|--------------|
| Model | Pivot Door | Sliding Pivot Panel | Sliding Swing Panel | Color Options | Trimmed Vertical Edge | Trimless Vertical Edge | Lock Options |
| Variotec Trimless | ✓ | ✓ | ✓ | ✓ | | ✓ | ✓ |
| Variotec Trimmed | ✓ | | | ✓ | ✓ | | ✓ |
| KWV-Tec Trimless | ✓ | ✓ | ✓ | ✓ | | ✓ | ✓ |
| KWV-Tec Trimmed | ✓ | | | ✓ | ✓ | | ✓ |
| KWP-Fold | ✓ | | | ✓ | | ✓ | ✓ |
| KWV-Tec Trimmed Acoustical | ✓ | | | ✓ | ✓ | | ✓ |



Perpendicular Stack Shown

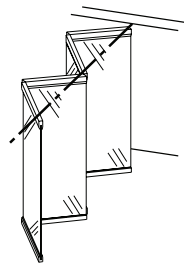
Individual Panels - Perpendicular, Parallel, Remote or Custom Stack (Variotec, & KWV-Tec)

Individual Panels are top supported by two (2) carriers that operate in the track system that allows panels to move and turn effortlessly through radius intersections that are engineered for heavy glass panels. The versatility of stack arrangements includes Perpendicular Stack, Parallel Stack, Remote or Custom Stack.



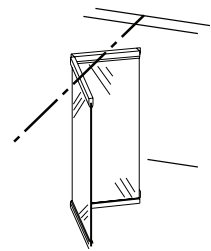
Continuously Hinged Center Stack (Centerfold)

Continuously Hinged Panels are hinged together to form a continuous panel train that allows for easy set-up. The Center Stack arrangement provides panel storage at one or both ends of the wall's installed position. The final closure panel is a half panel.



Continuously Hinged - Offset Stack (Variofold)

Continuously Hinged Panels are hinged together to form a continuous panel train that allows for easy set-up. The Offset Stack System allows panels to be stacked perpendicular to the main track & offset to the right or left.



Hinged Pairs Center Stack (KWP-Fold)

Hinged Pairs Panels are panels hinged together in groups of two (2), unless otherwise specified. Panels are top-supported by one (1) carrier in each panel. The Center Stack arrangement provides panel storage at one or both ends of the wall's installed position.

KWIK-WALL Company warrants each glass wall and its component parts to be free from defects in material and workmanship for a period of five (5) years from date of delivery to the original purchaser, when installed by an authorized KWIK-WALL distributor. KWIK-WALL Company reserves the right to have authorized personnel inspect any part alleged to be defective and to refuse any returned material unless the return was previously authorized by KWIK-WALL. (Glass is specifically excluded from the warranty.)

This warranty does not apply to any damage or deterioration caused by abuse or failure to provide reasonable and necessary maintenance. All field applied finishes, accessories or product modifications are specifically excluded under this warranty. KWIK-WALL's liability hereunder is limited to the replacement of any partition or component part found to be defective. Labor charges are the responsibility of the customer.

KWIK-WALL SHALL NOT BE LIABLE FOR ANY INCIDENTAL OR CONSEQUENTIAL DAMAGES. ALL OTHER WARRANTIES EXPRESSED OR IMPLIED INCLUDING ANY IMPLIED WARRANTY OF MERCHANTABILITY ARE HEREBY EXPRESSLY EXCLUDED.

Some states do not allow the exclusion or limitation of consequential or incidental damages, so the above limitation or exclusion may not apply to you.

This warranty gives you specific legal rights, and you may also have other rights which vary from state to state

Note:

Due to ongoing research and development, some variation may occur in product specifications and design. Please refer to your actual KWIK-WALL shop drawing(s) for exact product dimensions and specifications.

Distributed By:

